

AUDIO BUYS

**The Ultimate in Home
Enjoyment & Entertainment**



MONARCH
CUSTOM HOMES

TABLE OF CONTENTS

STANDARD - Security Systems and Monitoring	2
STANDARD - Additional Wireless Security Options:	3,4,5
CUSTOM - Structured Wiring	6
CUSTOM - Structured Wiring (Upgrades)	7
CUSTOM - Phone / Computer Network Outlets	8
CUSTOM - TV / Cable Outlet	9
CUSTOM - Multi-Media Outlet	9
CUSTOM - Home Office Outlet	10
CUSTOM - Conduit with Pull String	11
CUSTOM - Video Camera Pre-wire / WiFi	12
CUSTOM - Distributed Music Package	13
CUSTOM - Exterior Speakers	14
CUSTOM - Flat Panel TV Pre-Wire	15
CUSTOM - Theater Pre-Wires	16
CUSTOM - Home Theater “Ready” System	17
CUSTOM - Premium Home Theater Ready System	18
CUSTOM - Additional Speaker Packages	19
CUSTOM - Central Vacuums Systems	20
CUSTOM - Central Vacuum System Additional Options:	21

STANDARD Security Systems and Monitoring

VA LIC 11-4349

Standard Options

Description: Security systems offer you the peace of mind of knowing your family and new home are always safe. We offer many additional items that allow you to choose from basic protection to an individualized system that is customized to the level you desire. Below you will see the standard package offered along with the upgrades you can choose from for additional coverage.

LISTED BELOW REQUIRES CONNECTION TO TBI SMART HOME SOLUTIONS MONITORING.

OPTION 078296 / HTES0027 – Wireless Security System w/agreement (Upgrade # 1)

Sleek and smart, this wireless upgrade boosts your alarm system with and all-in-one 7” HD color touchscreen and provides 4x the range of traditional wireless security devices.

- All-in-one Qolsys IQ2 panel with 7” HD color touchscreen & photoframe screensaver, Siren, SMP Camera, LTE Cellular radio and WIFI communicator.
- PowerG Wireless sensors on all exterior doors (plans may vary)
- One (1) PowerG Pet immune motion detector
- Connection to Central Station Monitoring Services (appointment required after closing for programming and orientation).

****REQUIRES ALARM CONTRACT with TBI Smart Home Solutions****



Additional Wireless Security Options:

Option # 078299

Security Touchscreen Keypad for Wireless System:

Available on all Models: Includes one touchscreen keypad. This allows the homeowner to operate the system (arm/disarm) the system from another location in the home.

Option # 078230

Security Keypad Pre-wire Only

Option # 435

Wireless Water/Flood Sensor: Includes a sensor which can be configured to operate as either a standalone water/flood detector. It is ideally suited for a wide range of applications including bathrooms, Laundry Room and Basements. One (1) remote external probe is included which covers one area for flood prevention. Additional coverage areas may be monitored for flood with purchase of additional flood probes.

Option # 436

Wireless Portable Panic Button: Include a wireless emergency button designed to be worn as a pendant or clipped to your belt.

Option # 078011

Wireless Glass Break Sensor:

Available on all Models: Includes one Glass Break Sensor which can be mounted on any wall or ceiling to detect intrusion by sensing the sound the breaking glass. Option may be purchased multiple times in one home.

Option # 078012

Wireless Carbon Monoxide Detector – One:

Available on all Models: Includes one monitored carbon monoxide detector which can warn you of high levels of CO and send signals to Westminster Security's central monitoring station, who can then notify the fire department.

Note:

Some states require Carbon Monoxide Detectors to be installed in all homes. This Carbon Monoxide Detector (s) is **NOT** intended to be the primary household carbon monoxide warning system. It is intended to augment the performance of carbon monoxide sensors which may be required by applicable state laws.

Location is as follows:

Basement level in close proximity to the furnace and/or water heater in Mechanical area.

Additional Wireless Security Options (Continued)

Option # 078013

Fixed Heat Detector – One:

Available on all Models: The fixed heat detector offers expanded fire detection and installation flexibility by combining both rate-of-rise and fixed temperature sensors. Heat detectors detect fire without the presence of smoke which makes this application perfect for kitchens. The rate-of-rise thermostat senses the rise in temperature and signals an alarm if the increase is 15 degrees or more per minute. A built-in fixed temperature sensor will also signal an alarm if the environmental temperature rises above 135 degrees Fahrenheit.

Notes:

Fixed heat detector(s) are intended to augment the performance of the home's alarm system by providing remote notification of any alarm conditions when fire is present without smoke. This feature is **NOT** designed nor intended to be primary household fire warning system.

Choice of Locations are as follows:

- Basement level in close proximity to the furnace and/or water heater.
- First floor in close proximity to the kitchen
- Main attic

Option # 078153

Skybell WiFi Doorbell Camera

Option # 99450

Wireless Window and Door Contact: Use this option if you wish to secure / protect a window or door that is not covered in the Standard base security system selected. This is commonly required when structural options are selected. (Sunrooms, Conservatory, Bay Windows, Optional Doors and Windows...)

****Note: Additional window and door contacts may be required for any structural items purchase****

Additional Wireless Security Options

Option # 99453

Monitored Smoke Detector: This is your first line of defense in the event of a fire. These detectors will send a signal to your Monitoring company in the event a fire should occur. It is recommended that *one detector be placed on each level of your home* along with the already installed Smoke Detectors provided by your home builder.

Option # 99459

Wireless Motion Detector with Pet Immunity: These detectors are usually placed in main hallways or in walk-out basements. They have special dual technology so they can sense a pet up to 100 pounds of weight and not trip the alarm.

Option # 078005

Additional Keypad: This allows the homeowner to operate the system (arm / disarm) the system from another location in the home. The front door or basement door, if frequently used as a primary point of entrance, would be a convenient place for an additional keypad.

STANDARD : Structured Wiring

Base House

THE STANDARD BASE HOUSE INCLUDES THE FOLLOWING:

- **STANDARD NETWORK INTERFACE 20" PANEL**
 - PASSIVE CABLE TV DISTRIBUTION
 - TELEPHONE DISTRIBUTION W/ RJ45 PATCH CONNECTORS
 - BUILT-IN 110V POWER OUTLET
- **TELEPHONE OUTLETS**
 - UPON MOVE IN, OUTLETS WILL BE CONFIGURED FOR 2 LINES.
 - NOTE: TWO-LINE SERVICE MUST BE ORDERED FROM THE PHONE COMPANY.
- **TV / CABLE OUTLETS (2ea Coax) BROADBAND COMPUTER NETWORK OUTLET (CAT6) in lieu of phone**
 - THIS WILL PROVIDE INTERNET SERVICE TO **ONE** COMPUTER.
 - FOR IDENTIFICATION PURPOSES, THE WALL PLATE WILL BE TERMINATED WITH A **BLACK** RJ-45 INSERT

****Quantity of Outlets for phone -TV- Computer network varies by Community and Collection****

Standard distribution Modules for phone and TV have quantity limitations, please see your Audio Buys representative for details. ****Supplementary modules may be added****

If a homeowner has a requirement for **more than one** computer to be connected to the broadband Internet service, the Computer Network option will be required.



Structured wiring panel



Telephone



Network



Cable/TV

CUSTOM : Structured Wiring (Upgrades)

Upgrade Modules for Base Panel

Option # 99470

Network Interface 42" Panel with Hinged Cover

Option # 99473

8-Port Gigabit Network Switch

This option provides the additional network connectivity throughout your home allowing up to 8 connections.

Option # 99473-16

16-Port Gigabit Network Switch

This option provides the additional network connectivity throughout your home allowing up to 16 connections

Option # 99486

Computer Network Outlet with CAT-6 (per location)

CUSTOM : Phone Outlet / Network Outlet

Telephone / Computer Network

Option # 99476 Phone

Option # 99486 Network

Description:

The homeowner should consider this option for standard voice lines, fax machines, or modems. To ensure optimal performance, Category-6 wiring is installed in a “Home Run” configuration rather than the traditional daisy-chained two-pair wire that has been used in new home construction. Category-6 twisted pair wiring offers significantly higher performance and flexibility and reduces the likelihood of negative effects such as cross talk, noise and static. Category-6 twisted pair wiring consists of **four (4) twisted pair wires** and therefore provides flexibility at each outlet to support up to four phone numbers.

Please note the number of outlets that can be added is based on the modules installed in the interface panel.

❖ 1 Each - “Home Run” Category-6 twisted pair wiring from selected spot

- This wiring capable of supporting 4 telephone numbers.
- Twisted pairs offer a reduction in the chance of cross talk and static
- Ultra-High Bandwidth for passing digital signals
- Upon move in, outlet will be configured for 2 lines.

NOTE: TWO-LINE SERVICE MUST BE ORDERED FROM THE PHONE COMPANY.



Telephone Outlet
CAT-5e



Computer Network
CAT-6

CUSTOM : TV / Cable Outlet

Option # 99484

Description:

This option consists of RG-6 quad shield cable, a high-quality video cable which can support cable TV, FIOS, digital satellite, attic antennas and HDTV broadcasts.

Multi-Media Outlet

(Computer Network & TV Outlet)

Option # 99477

Description:

The homeowner should consider this option for all television locations. Each Multimedia outlet consists of RG-6 quad shield cable and a CAT-6 cable. RG-6 is a high-quality video cable which can support cable TV, FIOS, digital satellite, attic antennas and HDTV broadcasts. RG-6 cable is designed to transfer digital signals to TVs without degrading the signal. By running the RG-6 cable in a “Home Run” configuration, video distribution can easily be re-configured as changes are needed. This “home run” installation method is far superior to the conventional daisy chain installations of the past.

❖ **1 Each - “Home Run” RG-6 coaxial cable from selected spot**

❖ **1 Each - “Home Run” Category-6 twisted pair wiring Computer Network outlet**

(May require network router and/or switch to be active)

➤ **Able to pass digital signals without degradation at “high band width”**

- The way we watch television, or even communicate with one another, is changing. Digital technology as well as convergence products, web TV for example are combining many products into one unit. Using lower performance wire today will limit the homeowners’ ability to take advantage of current and future technologies.

➤ **HDTV (High-Definition Television)** is broadcast in some areas today, but within several years, this will be the primary format Network TV stations will be transmitted.

- With lower performance cable, it would be impossible to see all the advantages of digital source material: higher resolution, sharper picture, greater depth and better sound quality. Using RG-6 wire ensures you will be ready for the future.



TV outlet
(Coax/RG-6)



Multi-media outlet
(Coax/RG-6 & CAT-6)

CUSTOM : Home Office Outlet

Option # 99479

“Home Office” Workstations are designed for use by professionals, entrepreneurs, students or anyone who wants to connect with the outside world. The Home Office outlet configuration provides connectivity for all common components found at the work place including jacks for telephone, fax machine, modem and cable TV. Installed in a “Home Run” configuration, the outlet includes three CAT-6 cables and two RG-6 Quad-shielded cables. These advanced performance cables increase performance while reducing cross talk and static. Homeowner’s should consider this option for rooms such as home offices, children’s bedrooms or any room where they plan to use a desktop computer or a laptop computer.

Home Office Outlets include:

- ❖ **3 “Home Run” Category-6 twisted pair wire**
 - 1 Jack for Dedicated Voice Line (will support 2-line telephone)
 - 1 Jack for Dedicated Fax Line
 - 1 Jack for Dedicated Computer Data Line (Black RJ45)

- ❖ **1 “Home Run” Dual RG-6 coaxial cable**
 - This wire is high-bandwidth cable designed to handle digital transmissions
 - RG-6 coaxial cable can be used for any of the following:
 - Cable TV
 - Digital Satellite System
 - Local Broadcast channels via an attic mounted antenna
 - HDTV (High-Definition Television)
 - Cable modem for access to the internet



Home Office outlet
(Coax/RG-6 & 3ea CAT-6)

CUSTOM : Conduit with Pull String

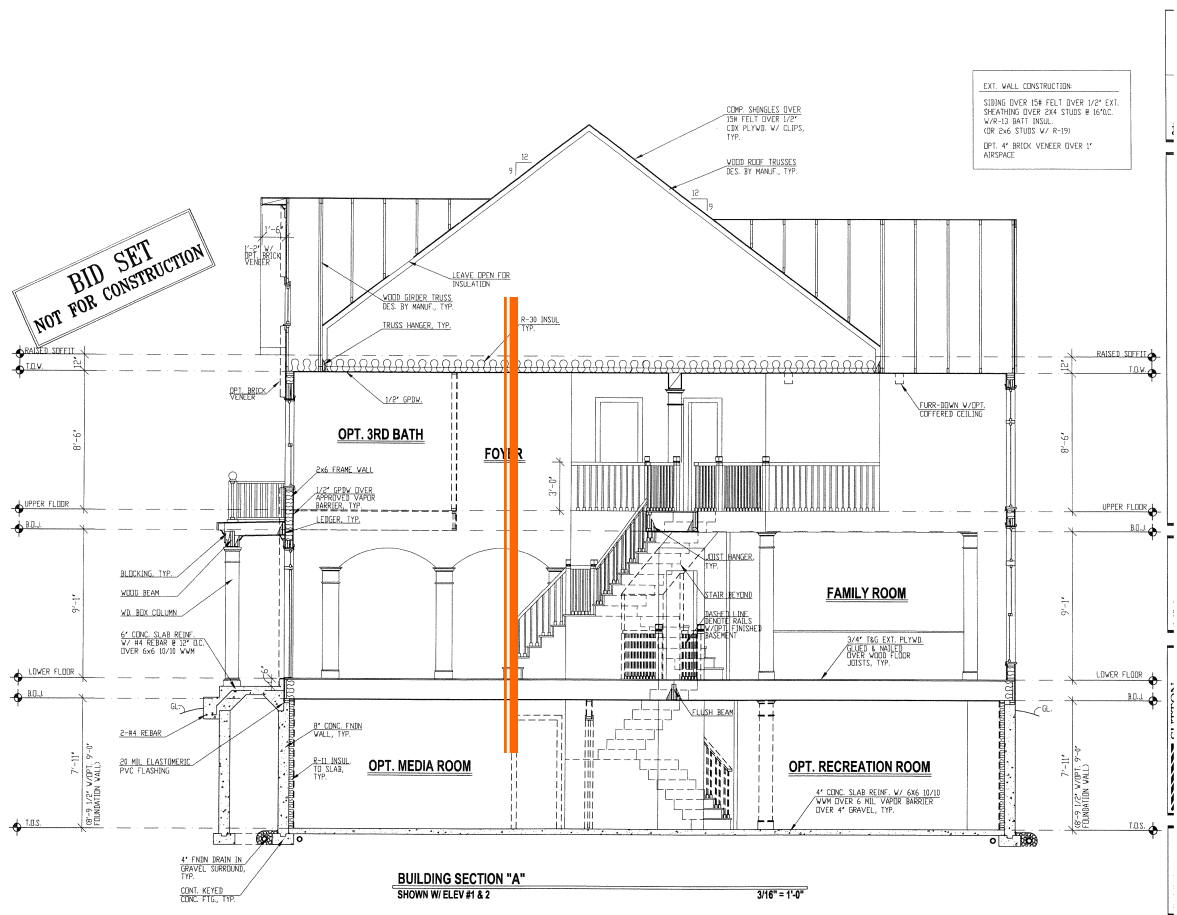
From Attic to Structured Wiring Panel

Option # 99480 – Structured wiring panel to Attic

Option # 99490 – Structured wiring panel to D-Marc / Service location

Description:

1½” flex conduit is installed from the network interface panel to the attic. A pull string will be installed in the conduit. This will provide assistance when additional outlets need to be run to the upper level of you home. With today’s changing technology, this option provides a solution for retrofitting wiring or adding to the system(s) already installed in your home.



CUSTOM : Video Camera Pre-wire

Ideal for Front Door Surveillance

or

Video Monitor in Infant Rooms & Play Rooms

Option # 99488 (Video Camera Pre-Wire – Only, *per location*)

Description:

This option provides the homeowner the ability to prepare an area and/or room for security surveillance and monitoring. This option consists of running Category-6 camera wire to location(s) of choice.

NOTE: This option provides ONLY THE WIRING from the designated equipment location to the Camera pre-wire location. This option is designed to support the homeowner's current or future electronics for Security viewing.

****Consult your Audio Buys Sales agent directly for this Option, to discuss the Design of a future Video Camera System, in regards to requirements and necessary Communication equipment. ****



Option # 078158 – WiFi Package

Option # 078159 – WiFi Pre-wire Only package

CUSTOM : Distributed Music Package

(Per Selected Location)

Option # 99600

Description:

This speaker option allows the homeowner to enjoy true musical reproduction throughout the house. The speakers should be considered on a per room basis. The cosmetic and functional designs of these in-ceiling speakers provide a very clean look with no exposed wires and are aesthetically pleasing in any décor. The professional installers' placement of these architectural series speakers will provide even distribution of music in any room. Featuring a volume control in each room, speaker volume can be adjusted or turned off independently of other rooms. All speakers will be "Home Run" to a central Audio Home Run Point. This Audio Home Run Point, a location designated by the homeowner, is where the homeowner will connect their stereo equipment. High-efficiency design specifications and ultra-flat frequency response make these speakers ideal for listeners all of types of music.

❖ **Architectural In-Ceiling Speakers** -Ideal for interior rooms where stereo sound is desired.

Consists of:

- 1 pair **ORIGIN** Acoustics D61 - [6.5" In-ceiling speakers]
- 1 each Stereo in wall volume control
- 1 each Audio Home Run Point (To be selected by purchaser)
-



Option # 99605 Distributed Music Mid-Level

Consists of:

- 1 pair **ORIGIN** Acoustics D65- [6.5" In-ceiling speakers]
- 1 each Stereo in wall volume control
- 1 each Audio Home Run Point (To be selected by purchaser)

Option # 99610 Distributed Music Premium-Level

Consists of:

- 1 pair **ORIGIN** Acoustics D85 - [8" In-ceiling speakers]
- 1 each Stereo in wall volume control
- 1 each Audio Home Run Point (To be selected by purchaser)
- ❖ All speaker wiring is Home Run to purchaser's specified Audio Home Run point and terminated for easy hook up to homebuyer's audio equipment.
- ❖ Distributed audio provides high quality music throughout the house.
- ❖ Volume control in each room. Allows volume to be adjusted or turned off independently of other rooms.



CUSTOM : Exterior Speakers

Option # 99614

Description:

This is ideal for your outdoor patio, pool and deck living spaces. You can have the same quality of sound that you enjoy indoors available for your outdoor enjoyment.

❖ Package includes:

- 1 pair **ORIGIN** Outdoor speakers
- 1 each Stereo in wall volume control
- Weather resistant hardware and brackets included

1 each Audio Home Run Point (Location selected by purchaser)



CUSTOM : Flat Panel TV Pre-Wire

Description:

This option provides wiring to a location designated by the homeowner for the future installation of a Plasma TV or LCD/LED TV wall-mounted display.

Option # 99700 Flat Panel TV Pre-Wire Local (Above MM Outlet)

This option consists of (2) HDMI and (2) CAT-6 wiring

Option # 99707 Flat Panel TV Pre-Wire Remote Location (Same Room - Medium)

This option consists of (2) HDMI and (2) CAT-6 wiring

Option # 99705 Flat Panel TV Pre-Wire Remote Location (Same Room - Long)

This option consists of (2) HDMI and (2) CAT-6 wiring

Option # 99708 Flat Panel TV Pre-Wire Remote Location (XL)

This option consists of (1) HDMI Balun and (1) CAT-6 wiring

Option # 99706 Flat Panel TV Pre-Wire Remote Location

Description:

This option provides wiring to a location designated by the homeowner for the future installation of a Front Projection ceiling mounted display.

Please note:

- **A Multi-media outlet must be located at the equipment location.**
- **Future TV/ Projector and equipment locations must be clearly noted on the floor plan diagrams.**
- **An Electrical outlet must be located at the Future TV / Projector location.**



DISCLAIMER: THE ABOVE PICTURE IS FOR ILLUSTRATION PURPOSES ONLY.
NO EQUIPMENT IS INCLUDED IN THIS PACKAGE

CUSTOM : Theater Pre-Wires

Option # 99710
Option # 99715

5.1 Home Theater Pre-Wire
7.1 Home Theater Pre-Wire

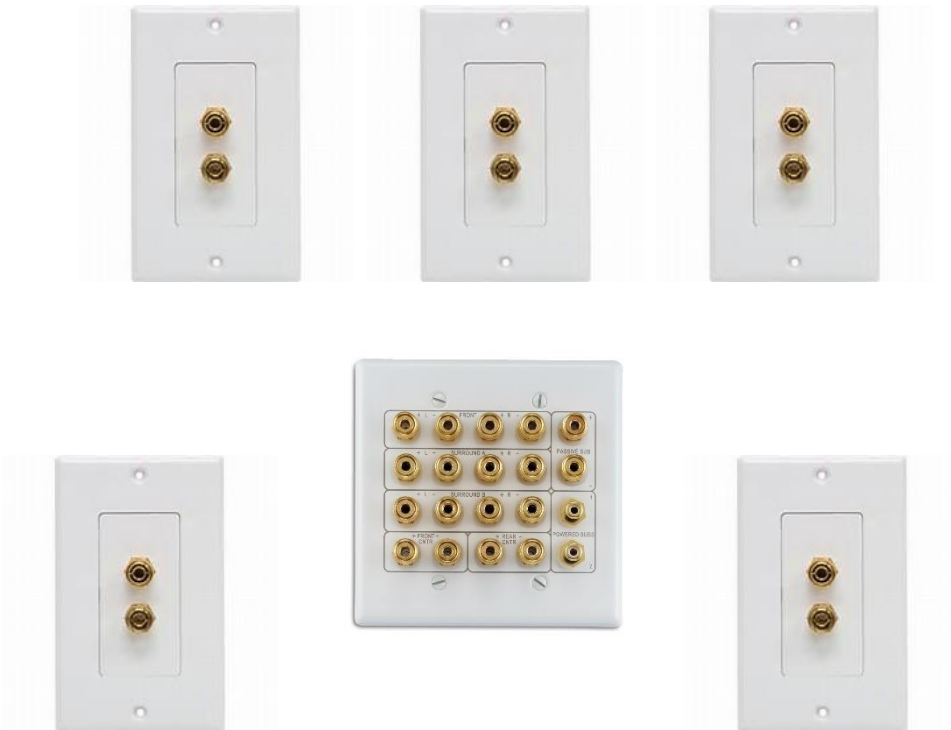
Plug in your **existing** equipment and speakers and experience the magic of home theater! The wall plates in this package provide easy connection and a finishing touch to home theater speaker connections.

Package includes:

- Single Room wired to accommodate (5) speakers and (1) subwoofer, Dolby Digital Surround Sound.
- (1) Home Theater wall plate for speaker connection to future surround sound receiver.
- (4) Single speaker wall plates for Front & Rear speakers.
- (1) RCA-to-RCA Subwoofer Connection Plates. For future powered subwoofer.

Package Includes:

- Single room wired to accommodate (7) and (1) subwoofer, Dolby Digital Surround Sound.
- (1) Home Theater wall plate for speaker connection to future surround sound receiver.
- (4) Single speaker wall plates for Front and Rear Speakers.
- (1) RCA-to-RCA Subwoofer Connection Plates. For future powered subwoofer.



CUSTOM : Home Theater “Ready” System

Option # 99720 (5) Speaker Surround Sound w/ Sub Pre-wire

Option # 99725 (7) Speaker Surround Sound w/ Sub Pre-Wire

Package includes:

- Single Room wired to accommodate (5) speakers and (1) subwoofer, Dolby Digital Surround Sound
- (5) Paradigm **CI-PRO P65-IW In-Wall or P65-R In-Ceiling** Speakers (Front, Center & Rear Speakers)
- Architectural speakers featuring extended frequency response & high-power handling.
- (1) Home Theater wall plate for Speaker Connection to future Surround Sound receiver
- (1) RCA-to-RCA Subwoofer Connection Plates. For future powered subwoofer.

Package includes:

- Single Room wired to accommodate (7) speakers and (1) subwoofer, Dolby Digital Surround Sound
- (7) Paradigm **CI-PRO P65-IW In-Wall or P65-R In-Ceiling** Speakers (Front, Center, Side & Rear Speakers)
- Architectural speakers featuring extended frequency response & high-power handling.
- (1) Home Theater wall plate for Speaker Connection to future Surround Sound receiver
- (1) RCA-to-RCA Subwoofer Connection Plates. For future powered subwoofer.



Paradigm®

THE ULTIMATE IN SOUND FOR MUSIC AND HOME THEATER™

CUSTOM : Premium Home Theater Ready System

Plug your surround sound equipment into this Premium system and experience the magic of home theater without having **big box** speakers in your room.

Option # 99730 Premium (5) Speaker Surround Sound w/ Sub Pre-wire

Package includes:

- Single Room wired to accommodate (5) speakers and (1) subwoofer, Dolby Digital Surround Sound
- (2) Paradigm **CI-Elite E80IW In-Wall** Speakers (Front Left and Right)
- (3) Paradigm **CI-Elite E80IW In-Wall** Speakers (Front Center and Rear Speakers)
- Architectural speakers featuring extended frequency response & high-power handling.
- (1) Home Theater wall plate for Speaker Connection to future Surround Sound receiver
- (1) RCA-to-RCA Subwoofer Connection Plates. For future powered subwoofer.

Option # 99735 Premium (7) Speaker Surround Sound w/ Sub Pre-Wire

Package includes:

- Single Room wired to accommodate (7) speakers and (1) subwoofer, Dolby Digital Surround Sound
- (2) Paradigm **CI-Elite E80IW In-Wall** Speakers (Front Left and Right)
- (5) Paradigm **CI-Elite E80IW In-Wall** Speakers (Front Center, Side & Rear Speakers)
- Architectural speakers featuring extended frequency response & high-power handling.
- (1) Home Theater wall plate for Speaker Connection to future Surround Sound receiver
- (1) RCA-to-RCA Subwoofer Connection Plates. For future powered subwoofer.

Note: Please ask about in-ceiling speaker options for rooms where in-wall speakers may not be an option due to structural circumstances.

Paradigm®

THE ULTIMATE IN SOUND FOR MUSIC AND HOME THEATER™

CUSTOM : Additional Speaker Packages

Option # 99740 Rear Surround Speaker Pre-Wire Only

Description:

This option provides the homeowner the ability to prepare a room for rear surround speakers. It is important to note on the floor plan approximate locations and height requirements. It is also critical to note on the floor plan the audio home run point where the audio equipment will reside. This option provides **ONLY THE WIRING** from the designated equipment location to the speaker location. This option is designed to support the homeowner's current electronics and speakers.

Option # 99756 Rear Surround Speaker Package (ORIGIN Acoustics 6.5")

Description:

This option includes in-wall or in-ceiling speakers to be used as rear surround sound speakers. The option includes (1pair) **ORIGIN Acoustics *in-wall*** or ***in-ceiling*** speakers and (1each) audio home run wall plate for two speakers.



Option # 99745 Rear Surround Speaker Package (Paradigm)

Description:

This option includes in-wall or in-ceiling speakers to be used as rear surround sound speakers. The option includes two (2) Paradigm **CI-PRO P65-IW In-Wall** speakers or **P65-R In-Ceiling** speakers and an audio home run wall plate for two speakers.



Option # 99750 Subwoofer Pre-Wire Only

Description:

This option provides the plates and wiring for a powered subwoofer. It is important to note on the floor plan the locations for the subwoofer as well as the location of the audio equipment. It is recommended to add an electrical outlet next the sub-woofer pre-wire.

See your Toll Brothers Sales agent for this electrical request.

CUSTOM : Central Vacuums Systems

Description:

A Central Vacuum System allows you the homeowner to do away with heavy canister vacuums and bulky uprights. This modern-day system is a great way to keep your home cleaner, especially if you are an allergy suffer. You will never have recycled vacuum air in your home again!

Our technicians will lay out a custom piping system throughout your home and you can pick and choose which rooms you would like to have your inlet hookups. An inlet looks similar to an outlet on your wall and has a flap style door that your light-weight hose will connect into for your vacuuming needs. These systems have great suction and the best part is they are quiet!

Central Vacuum Systems for 1st and 2nd floors only

Power unit

Standard tool set: hose, turbine floor brush.

Wall inlets to provide the coverage for the standard first and second floors of your home.

(Please see list of standard number of inlets per Collection square footage)

<u>Collection</u>	<u>Inlet Number</u>
(Option #99800)	5
(Option #99801)	8

Option # 99805 Central Vacuum Systems Finished Basement

Central Vacuum Addition for Finished Basements: This option allows you to purchase additional inlets for your finished basement. *This option requires a standard package*

<u>Collection</u>	<u>Inlet Number</u>
(Option #99805)	3
(Option #99806)	4

Please consult your Audio Buys sales team member for the number and layout of Inlets required for your home configuration.

CUSTOM : Additional Central Vacuum System Options

Option # 99810

Additional Vacuum Inlet: This option allows you to purchase more inlets in addition to the standard amount that come with your collection.

Option # 99825

VacPan Automatic Dustpan: With a quick kick of the foot you can sweep all your dust and debris into this convenient floor mounted inlet. No more bending over with a dust pan after sweeping! The VacPan inlet can be installed in various locations of your home.

It is important for the home buyer to identify the location(s) and number of VacPan purchased so that our technicians can install the proper equipment. This is key since most VacPans are installed under a cabinet and any tile, wood or other flooring. This needs to be properly measured to ensure the proper spacing and placement. Please consult your sales rep for any information or questions





Our system design philosophy sets us apart

When you select Audio Buys' for your project, you benefit from a team of industry professionals including our creative system design engineers who have years of experience and training in interior design, room acoustics and consumer electronics.



You will benefit from our talented installation staff that provides professional system integration and prompt courteous service.



You will benefit from our system design foundation. All system designs at Audio Buys are carefully envisioned and constructed to satisfy current and future needs.

Performance
Ease-of-Use
Integration
Reliability
Value

Years of both service and experience combined with our unparalleled design approaches keeps Washingtonians sharing our company's name and great reputation.

For more information, please contact:

Barry Wittenberg
703-675-5697

barryw@audiobuysinc.com

www.audiobuysinc.com

13525 Wellington Center Circle, Suite 123 Gainesville, VA 20155